

30 June 2012

Winter Greetings to you all.

On behalf of the Board I am thrilled to advise Frank Nobilo (the Golfer)has kindly donated \$ 40,000 USD to the Integrated Neurological Rehabilitation Foundation.

Late last year we hosted Frank Nobilo; his lovely wife Selena and Frank's mother at the Foundation where they viewed a class and spoke with our clients. It was a successful day as there was a strong media attendance including TV/ Sky; Print and Radio representation along with Funders/ sponsors / dignitaries and various health officials..

The Foundation is humbled by the latest Frank Nobilo donation..Frank has twice before blessed us with a donation which has greatly assisted the Foundation to provide the quality services Inna and her special team provide to our clients.

I am delighted to also advise the Foundation Board of Trustees recently appointed three (3) new trustees. All new trustees appointed offer a diverse range of business acumen and bring a wide range of skills to the Foundation.

These new trustees will greatly assist the board in implementing the INRF strategic plan & vision of the Integrated Neurological Rehabilitation Foundation moving forward.

Greg Bateman has an extensive background in Accountancy & finance before becoming MD of Solution 6 which he & his partner sold to MYOB. Subsequently Greg was the MD of Results on the North Shore before starting his own strategic Management Company called O Conner Bateman .

Vaughan Bayer; originally from the Waikato has an extensive accountancy and financial background. Vaughan is a CFO in a fast growing Auckland based consumer finance company . He is currently completing his Institute of Directors exams and has joined the Ice Angels organization

Frank Pollard joins the Foundation having over 20 years senior management experience at Telecom within their Head Office group. Frank is currently working with Barkers Business Brokers located on the North Shore Business park..He and his wife also own a company that contract their services to the SKY media company.

I urge you all to read Jan Browns enclosed summary report on the Birmingham's recent UK research paper on Conductive Education. We have on sent this to the MOH and other agencies ; funders and sponsors as it confirms the excellent services and work our specialist conductor teams perform at Tui Glen

Lastly we are in the process of upgrading our website which will be completed in the near future and will be more accessible for all to view & enjoy.

Best regards to you all.

Kit Kingston, Chairman

Our Mission is:

To provide the highest quality of rehabilitation through Conductive Education for people with neurological disorders in New Zealand

Next term starts: Monday, 16th July 2012

Research results on benefits of Conductive Education in quality of life and rehabilitation of Stroke clients



– Birmingham, England.

As many of you are aware I had the opportunity to go to the National Institute of Conductive Education in Birmingham last year. Since this visit I have been in contact with them from time to time over various issues, one being the research that they are undertaking into the effectiveness of Conductive Education in improving the quality of life for stroke clients. A few days ago I was able to get an interim report of their research and I would like to share some of the conclusions with you

“The main focus of the research project is a randomised waiting list control trial. The methodology includes a range of quantitative measures to evaluate the impact of Conductive Education for stroke survivors. This report is based on the collated results of 63 people (a further 30 people are currently in the process of receiving the service – final results will be available in August 2012).

As numbers have increased over the duration of the project there are now strong indicators of areas where Conductive Education has had a significant impact on the quality of life for people who have survived a stroke. This report demonstrates positive statistically significant changes from the Stroke Impact Scale in the areas of strength, hand function, activities of daily living, mobility, memory and thinking and stroke recovery. Statistical significance was also found in the reduction of depression through HADS and a positive trend towards reduction in anxiety. These results show the significance of providing a holistic rehabilitation system, one which simultaneously spans the physical and psychological changes which occur as a result of a stroke.

The vast majority of participants are classed as having long term chronic conditions. Over the life of the project there has been a gradual increase in the post stroke mean up to the current level of 44.9 months. This is a significant factor in the role of Conductive Education in the stroke care pathway as we have given stroke survivors the opportunity to engage in rehabilitation programmes much longer post stroke when compared to other rehabilitation programmes which only offer limited rehabilitation provision of a few months post stroke (Forster & Young, 2002). The results therefore indicate that irrespective of length of time since stroke, significant progress can be made in many areas of quality of life. These could have a longer term impact on the quantity and type of services required for individuals throughout the stroke care pathway”.

*From Developing stroke care for adults in the community: Rehabilitation through Conductive Education.
Dr Melanie R Brown, Dr Jagjeet Jutley, Dr Judith Bek*

I suppose the above findings are not new to those of you in the Foundation who have for years been receiving rehabilitation in Tui Glen, but as we all know for the Foundation to receive significant funding from Central Government we have to provide evidence. We are hopeful that the Birmingham research and its findings will assist us to get the recognition of the effectiveness of Conductive Education and eventually the level of funding needed to make a difference to more people affected by neurological disorders.

Jan Brown, Trustee



Hello Everyone,

Time is running by! We have already finished our second term. As you all know Inna has been on leave since the middle of this term. and we have got a new assistant, Lera, temporarily helping our team during the classes till the end of August.

Lera is from Stavropol which is South -West of Russia. She has been in New Zealand for the last four years with her family. She has studied nursing in New Zealand and has some knowledge about neurological conditions.

Lera has been helping us three times a week in different groups. Everybody has welcomed her and she has been well accepted by our clients and the team.

Thank you for your understanding and acceptance in class changes. We hope you had a good term and we are looking forward to seeing you in term three.

Regards,

Nora Keczan, Rehabilitation Specialist

Membership

This year we would like to extend an invitation to family and friends and supporters to become members of the INRF. Enclosed is an application to become a member or make a donation.

TUI GLEN ART CLASS

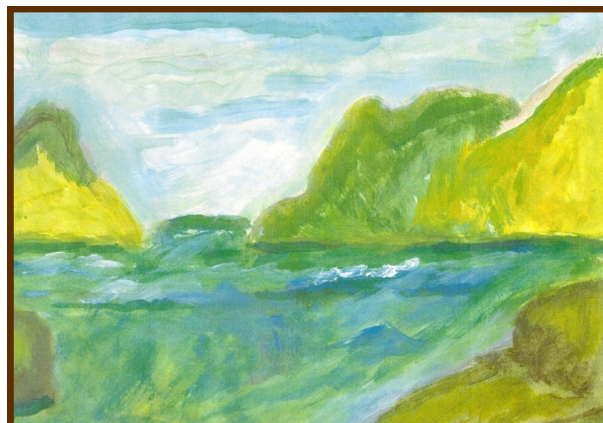
Art lessons for clients and partners have started and everyone is having a great time.

The classes are held every Monday 1.30-3.30pm and cost \$ 5.00 per lesson

We still have room for 3 more budding artists. You don't have to be a painter as full tuition will be given.

The picture on the right shows one of our student's pictures after his first class.

John Toole



Disability Allowance Assistance (Work and Income)

Disability Allowance is a weekly payment for people who have regular, on-going costs because of a disability, such as visits to the doctor or hospital, medicines, extra clothing or travel and may cover your session fees. You must meet an income test .

Currently this payment is: \$59.12 weekly

This applies if you receive NZ Super and have a disability

See John Toole if you want more information



Integrated Neurological
Rehabilitation Foundation

*Rehabilitation through
Conductive Education.*

2 Claude Brookes Drive,
Henderson, Auckland 0610
P O Box 21-504, Henderson
Auckland 0650

Phone: 09 836 6830
Fax: 09 836 6832
E-mail: admin@inrf.org.nz
www.inrf.org.nz



Thanks to all our Funders:



Donations can be made to INRF in the following ways:

- Cheque made payable to INRF and mailed or given to Administration
- Cash can be handed to Administration at INRF
- Eftpos is now available.
- Electronic payment can be made to INRF
ANZ Bank Account No. 011825-0007244-00
Please put your name in the reference section

Automatic Payment can be set up to the above account.

We have a new tenant in Office 5 named Helen, who is working for the MFS Trust (Multicultural Family Services Trust).

The rooms at the Centre are available for hire for many different occasions such as meetings, weddings, parties at very attractive rates.

Please contact Janet or John in Administration for more details

Phone: 836 6830

Board of Trustees

Kit Kingston, Chairman
Frank Schwanner
Jan Brown
Kirk Wallace
Franz Schwanner
Greg Bateman
Vaughan Bayer
Frank Pollard

Advisory Trustee

Inna Shoshina

Honorary Auditors

HLB Mann Judd

Honorary Solicitor

Mike Whale, Lowndes Assoc.

Accountant

Peter Mundy

Thanks to all our fantastic Volunteers