



Integrated Neurological
Rehabilitation Foundation

NEWSLETTER

5th April 2012

In this Issue:

Chairman's message	1
Mission statement	1
Start date for next term	1
Strategic Plan	2
Art Class	3
Disability allowance	3
Conductors news	3
Information	4

Message from the new Chairman

Some of you may remember me when I served as a Foundation Trustee for 4 years ending in 2008. I have now been re-elected as a Trustee and have the honour of being your Chairman for this year.

I would like to take this opportunity to thank Frank Schwanner for all his tremendous work over the last 19 years. Frank remains as a Trustee and we are thankful for his presence on the INRF board. In November this year we will have been operating for over 20 years.

In February the INRF Board called a general meeting where the new INRF Trust deed was approved and which has now been lodged at the Charities Commission. Many thanks to the previous Board for all their efforts working through the new Trust Deed to ensure the Foundation has a solid platform for the next 20 years.

The Board have approved and will implement a revised Strategic plan progressively throughout the next two to three years. The main points of the plan are on page 2.

We are committed to promoting and enhancing the INRF services to our clients. We have increasing pressure of more client referrals which Inna and her team are working through.

INRF is fighting for funding in a tough economic climate for Not For Profit organizations.

Regrettably there is a diminishing availability of Charitable dollars and many organizations fighting for a piece of this pie.

There remains a great difficulty in getting MOH and DHB funding increases as their own Health budgets have been cut by the government

INRF are looking at all avenues required to maintain the terrific services we offer to the community

INRF Conductors are under pressure and are requesting a new third Conductor be engaged.

Kit Kingston, Chairman

Our Mission is:

To provide the highest quality of rehabilitation through Conductive Education for people with neurological disorders in New Zealand

**Next term starts:
Monday, 23rd April 2012**

Updated Strategic Plan 2012—2014



What we want to achieve by 2014

By end of 2012 we intend to engage a new conductor & grow to accommodate 110 clients under 65 and 40 clients over 65.

By end 2013 we intend to increase these numbers to what the centre is capable of accommodating.

By 2014 it is intended that we open a rehabilitation centre in Manukau.

Financial	Growth	Research/ Evaluation	Delivery/Facility
Increased funding from MOH	Increase profile of INRF	Liaise with C.E. Birmingham re outcome of their research	Implement and train staff to use contact management software
Organise funding from Waitemata District Health Board for over 65's	Increase relationships with agencies able to refer clients to us	Seek funding for CE evaluation should Birmingham be inconclusive	Update file management system
Reduce costs where possible	Investigate possibility of running youth classes	Implement simple form of evaluation of clients' progress	Update policies monthly
Promote use of facility for events	Set up programme to use exercise equipment		Write and implement a Service Delivery model.
Seek funding from existing and new funding agencies to support growth of INRF			Increase weeks rehabilitation is delivered and use facility in break times
Work towards financial independence from funding agencies.			Recruit a third conductor
			Undertake a staffing needs review
			Set up a simplified client fee payment system, including Eftpos, direct credits, etc.
			Continually improve the facility including car park covering and upgrades to bathrooms, etc.
			Review phone system.





A good time was had at our Christmas lunch held at the RSA, Te Atatu Peninsula.

The first term of this year has finished. Most of our clients have safely returned to our rehabilitation classes after the summer break.

During this term we have established two new classes; one for people with Multiple Sclerosis and the other for people with other disabilities. There was a significant increase in the number of our clients in some classes. So you can see that these past few months have been busy for our rehabilitation team.

I attended, as part of my professional development a course on Influencing Public Policy and Social Change. This was the third paper for my Graduate Diploma in Not for Profit Management. It was a great opportunity to learn how and what can we do for INRF to be more recognisable and accepted.

Inna Shoshina, Senior Rehabilitation Specialist

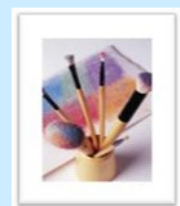
ART CLASS

INRF has received a Grant from Auckland City Council for art lessons for clients and partners

The classes will be held every Monday 1-3.30pm Cost \$ 5.00 per lesson

You don't have to be a painter as full tuition will be given

There are only 8 positions and 2 are already taken so get in quick



Disability Allowance Assistance (Work and Income)

Disability Allowance is a weekly payment for people who have regular, on-going costs because of a disability, such as visits to the doctor or hospital, medicines, extra clothing or travel. You must meet an income test.

Currently this payment is: \$59.12 weekly

This applies if you receive NZ Super and have a disability

See John Toole if you want more information



Integrated Neurological
Rehabilitation Foundation

**Rehabilitation through
Conductive Education.**

2 Claude Brookes Drive,
Henderson, Auckland 0610
P O Box 21-504, Henderson
Auckland 0650

Phone: 09 836 6830
Fax: 09 836 6832
E-mail: admin@inrf.org.nz
www.inrf.org.nz

Thanks to all our Funders:



Donations can be made to INRF in the following ways:

- Cheque made payable to INRF and mailed or given to Administration
- Cash can be handed to Administration at INRF
- Eftpos available very soon
- Electronic payment can be made to INRF
ANZ Bank Account No. 011825-0007244-00

We have two new tenants joining us in April so please say hellow.

- Rachelle from Ear Health will be moving into Office 3
- Flora from Progressive Counselling into Office 4.

The rooms at the Centre are available for hire for many different occasions such as meetings, weddings, parties at very attractive rates.



Board of Trustees

Kit Kingston, Chairman
Frank Schwanner
Jan Brown
Kirk Wallace
Franz Schwanner

Advisory Trustee

Inna Shoshina

Honorary Auditors

HLB Mann Judd

Honorary Solicitor

Mike Whale, Lowndes Assoc.

Accountant

Peter Mundy

**Thanks to our valuable Volunteers who help keep our
Centre looking and operating at its best .**